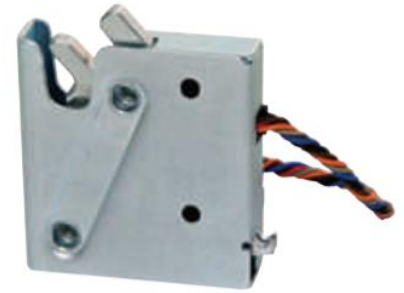


## R4-EM (5 & 7 Series) Electromechanical Rotary Latch

Sealed motor · Stainless steel housing option  
Electronic access with internal motor control

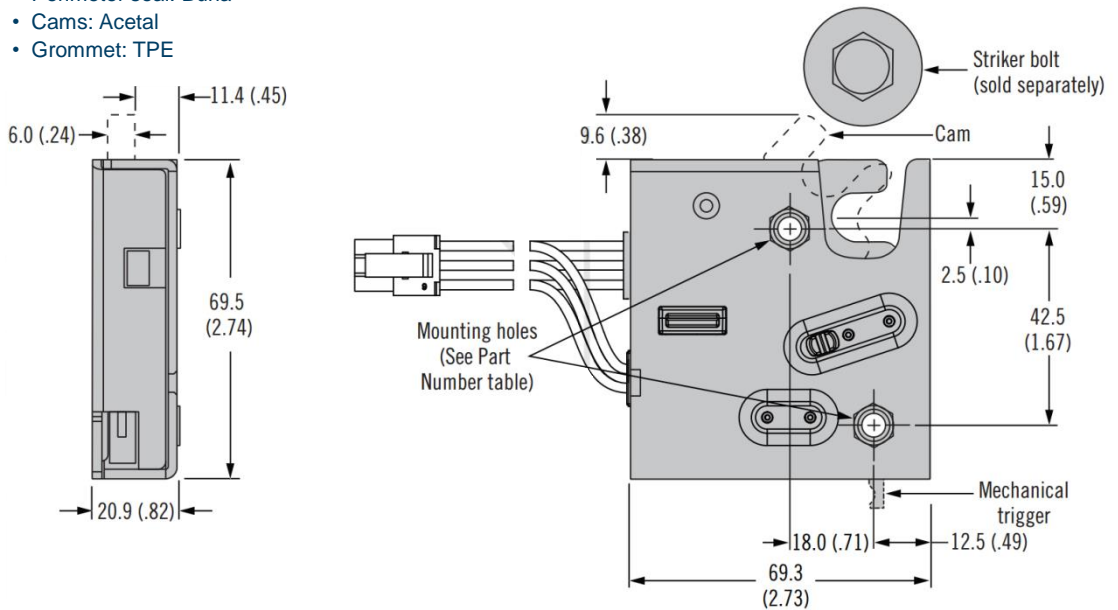
### Features

- Motor actuator sealed against water and dust ingress to IP56
- Corrosion resistant plated-steel and stainless steel options
- Push-to-close, electronic release
- Versatile rotary mechanism
- Concealed latching
- Microprocessor control
- Auto or delayed relock functionality
- Minimal power draw
- Optional internal microswitch for latch status
- Simple mechanical over-ride

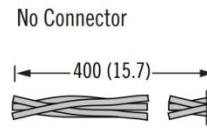
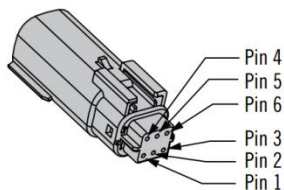
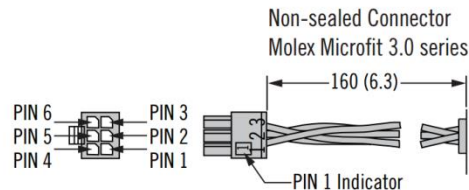
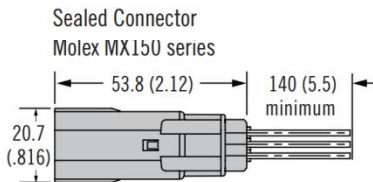


### Material

- Mechanism
  - Housing, cam, trigger, pins: Zinc nickel plated steel or stainless steel
  - Springs: 300 Series stainless steel
- Electronic actuator
  - Housing: PC/ABS
  - Bellows, wire seal: Silicone
  - Perimeter seal: Buna
  - Cams: Acetal
  - Grommet: TPE



### Latch Wiring Connections



### Electrical Specifications

- Recommended operating voltage: 12 to 24 VDC
- Typical operating current (average at no load): Less than 600 mA at 12 VDC
- Input signal current draw: 25mA maximum at 24 VDC
- Microswitch rating: 3A maximum at 12 VDC

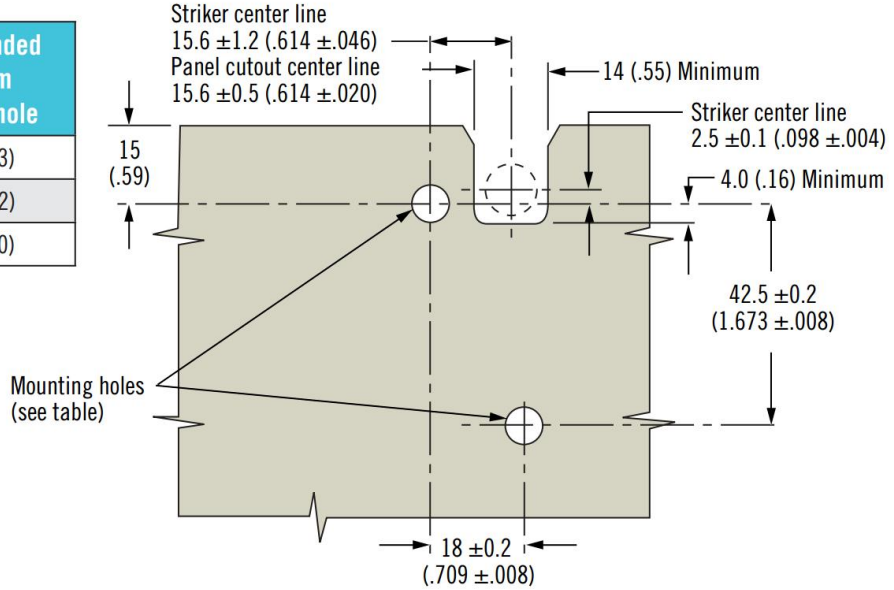
### Wire Color Code / Connector Pin Assignment:

- PIN 1: Brown: Ground (-)
- PIN 2: Red: Power 12 to 24 volts DC
- PIN 3: Orange: Control signal 12 to 24 volts DC
- PIN 4: Black: Microswitch common
- PIN 5: Blue: Microswitch N.O. contact
- PIN 6: Grey: Microswitch N.C. contact

## Installation

### Panel Preparation

Base Mounting Style	Recommended minimum mounting hole
1/4-20 thread	Ø 7.2 (.283)
M6 thread	Ø 6.9 (.272)
Thru hole	Ø 7.6 (.300)



**R4 - EM - T B A - 1 S C - P M**

#### T Trigger Style

- 5 Auto re-lock, side trigger, with kick-out spring
- 7 Delayed re-lock, side trigger, with light spring
- R5 Auto re-lock, rear trigger, with kick-out spring
- R7 Delayed re-lock, rear trigger, with light spring

#### B Base Mounting Style

- 1 1/4-20 thread
- 2 M6 thread
- 3 Ø 7.0 (.27) thru hole

#### A Alternate Configurations

- None Standard configuration
- 2 Strong (kick out) cam spring (delayed relock)
- 3 High strength cam (steel cam only) **M** = none only
- 4 High strength cam with strong (kick out) cam spring (delayed relock, steel cam only) **M** = none only

#### M Material Options

- None Steel, zinc-nickel plated
- B Stainless steel, passivated
- A** = none or 2

#### P Packaging Options

- None Individually packaged
- 1 Bulk packaged

#### C Connector Options

- 1 Non-sealed connector
- 2 No connector (stripped and tinned)
- 3 Sealed connector

#### S Switch Options

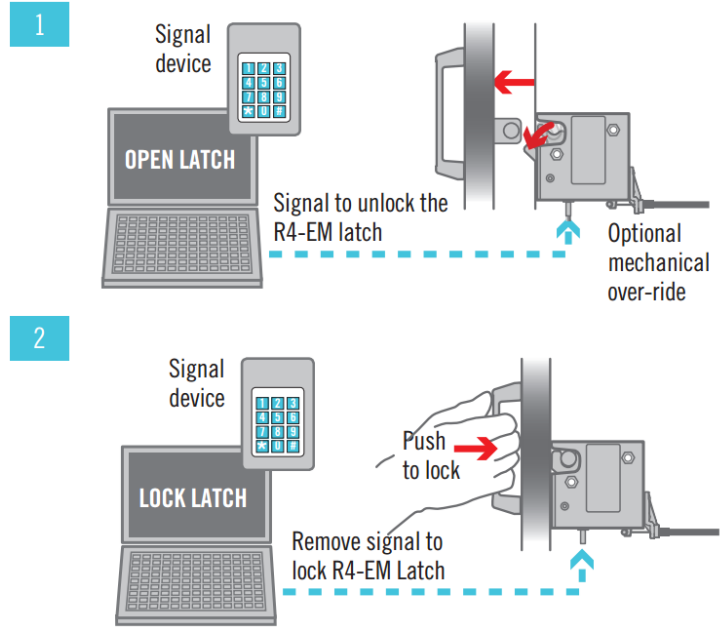
- 3 No switch
- 6 Internal latch status switch

## R4-EM Electronic Rotary Latch

### Operating instructions

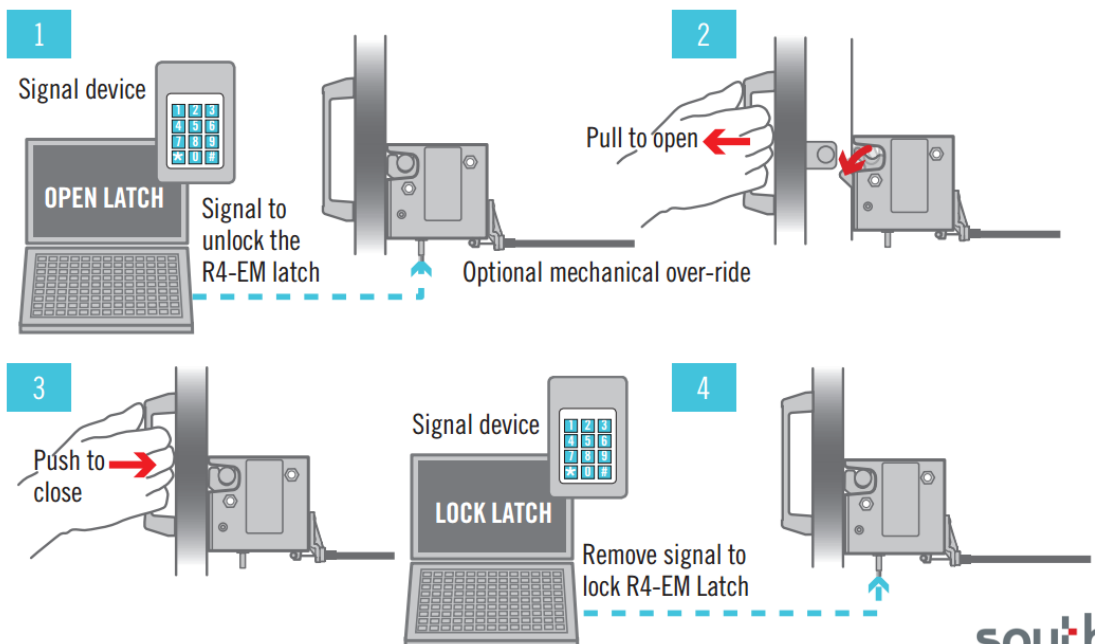
#### Operation – Auto reload

1. The signal unlocks the R4-EM latch and releases the spring loaded cam which rotates out to push a lightweight door open. The mechanism will cycle through unlatched then re-latched state automatically, regardless of input signal on time.
2. Push door closed to engage striker after unlock time has expired. Striker will rotate cam to closed position



#### Operation – Delayed reload

1. The signal unlocks the R4-EM latch leaving a biased closed door in the closed position. The unlock time is controlled by the access control device.
2. Manually pull door/striker free from R4-EM latch.
3. Manually push door closed. Striker will rotate cam to closed position, however latch will remain unlocked and can be re-opened as long as signal is present.
4. After accessing the door, the signal can be removed to re-lock the R4-EM. This can be done with the door in the open or closed position.



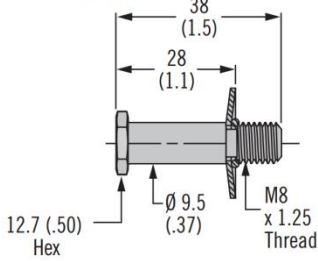
## R4-EM Electronic Rotary Latch

Strikers - Cable mounting kits

### Striker Bolt - Large

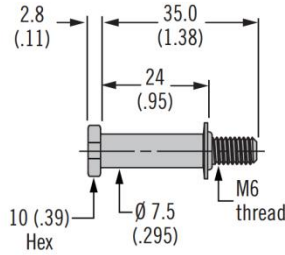
Part number R4-90-121-10

R4-90-121-20



### Striker Bolt - Small

Part number R4-90-511-20

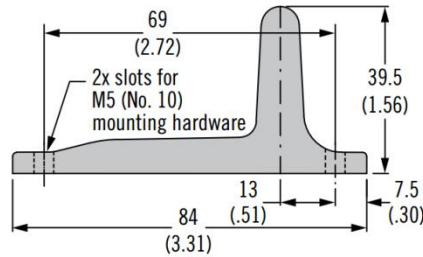
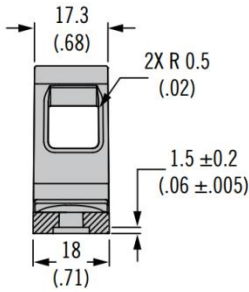


### Material

- Striker bolts: Stainless steel or steel, zinc plated
- Cast strikers: Zinc alloy
- Cable mounting kits: Glass-filled nylon, black

Cast Striker with Door Sensor Part number R4-90-804-10

Cast Striker without Door Sensor Part number R4-90-800-10



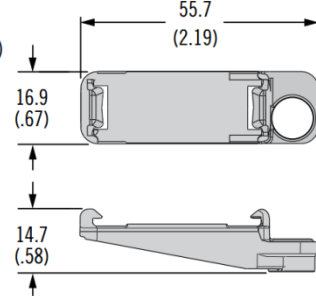
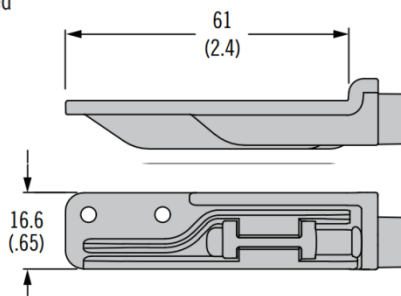
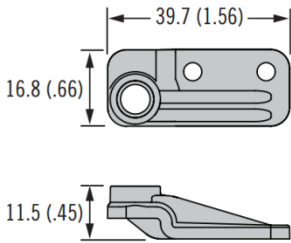
### Cable Mounting Kit

Part number R4-EM-52 – Rivets included

Part number R4-EM-72 – Screws included

Part number R4-EM-87 – Rivets included

Part number R4-EM-952



	Striker Bolt		Cast Striker		Cable Mounting Kit			
	R4-90-121-XX	R4-90-511-20	R4-90-800-10	R4-90-804-10	R4-EM-52	R4-EM-72	R4-EM-87	R4-EM-952
R4-EM-9	✓		✓	✓				✓
R4-EM-8	✓		✓	✓				
R4-EM-5 & 7	✓		✓		✓		✓	
R4-EM-4 & 6		✓				✓		
R4-EM-1 & 2	✓		✓		✓		✓	

southco®

We are proud to be Southco's authorized distributor of over 20 years